

technical hotline +44 (0)1268 563720

raised floor systems



range introduction

features and benefits

Interact Underfloor Power is a low profile powertrack system catering for single and multi-circuit applications, specifically designed to ensure a fast and simple installation.

It is suitable for standard, clean earth, uninterrupted or dedicated power supplies and allows power throughout the building.

- **Patented 'snap fast' crocodile joints**
- **Available in 40A and 63A**
- **Dual tap-off for twin system offers simple 'single fit' installation**
- **Key coded and colour coded tap-offs**
- **Powertrack with integral end feed available**
- **Complies with the requirements of BS EN61534**
- **Complies with the requirements of BS 7671:2008 IEE Wiring Regulations (17th Edition)**
- **Quality, reliability and safety as standard**
- **5 year guarantee**

raised floor systems

customer services +44 (0)1268 563404

KEY CODED TRACK

- Prevents inadvertent mixing of configurations

**TRACK INTERLINKS AVAILABLE**

- Flexibility to achieve maximum floor coverage

**AVAILABLE IN 40A AND 63A**

- Flexible to suit project requirements
- Lower rating opens opportunities for low cost installations

SIMPLIFIED TRACK ORDERING

Track comes complete with:

- Dust Covers
- End Caps
- Fixing Bracket
- Crocodile Joints

A GENUINE TWIN POWERTRACK SYSTEM

- Clean Earth and Standard Earth in one single track
- Single fitting of two circuits for speed of installation

PRE-ATTACHED SLIDING DUST COVERS

- Keeps track clean prior to and during installation

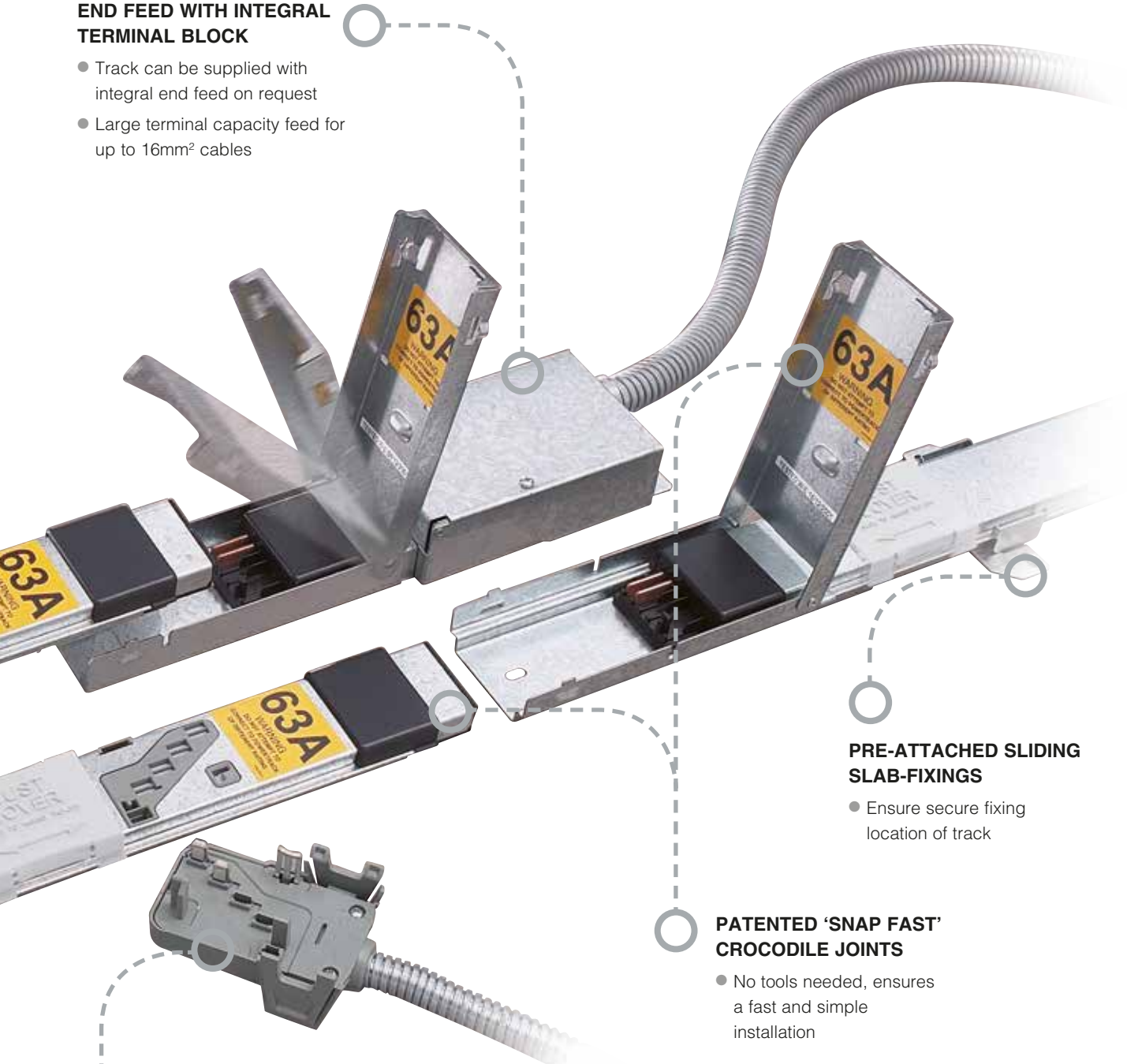
DESIGNED FOR USE WITH CABLELINK PLUS MODULAR AND CABLELINK PLUS SINGLE PAN FLOORBOXES

technical hotline +44 (0)1268 563720

raised floor systems

END FEED WITH INTEGRAL TERMINAL BLOCK

- Track can be supplied with integral end feed on request
- Large terminal capacity feed for up to 16mm² cables



PRE-ATTACHED SLIDING SLAB-FIXINGS

- Ensure secure fixing location of track

PATENTED 'SNAP FAST' CROCODILE JOINTS

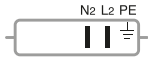
- No tools needed, ensures a fast and simple installation

KEY CODED AND COLOUR CODED TAP-OFFS AND SOCKETS

- Provides mechanical protection against cross pole contamination

SOCKET SPACINGS

- 300mm socket spacings
- Enables tap-off to be fitted at regular intervals

**63 AMP
SYSTEM**
63 Amp Track

 STANDARD GREY
SPN

 AUX GREEN
SINGLE PHASE

 CLEAN EARTH
RED
CE

 3 PHASE GREEN
TPN

 DUAL CE & STD
RED / GREY
DUAL

1.2M TRACK

PE is earthed to case

PE is earthed to case

 Pitch 300mm
4 sockets

UB61233GRY

UB61233GRN

UB61234RED

UB61235GRN

UB61236DUO

2.4M TRACK

 Pitch 300mm
8 sockets

UB62433GRY

UB62433GRN

UB62434RED

UB62435GRN

UB62436DUO

3.6M TRACK

 Pitch 300mm
12 sockets

UB63633GRY

UB63633GRN

UB63634RED

UB63635GRN

UB63636DUO

All 63A underfloor powertrack incorporate shutters and are rated to IP4X. Complies with the requirements of BS EN61534.
Track comes with the following slab mounting brackets: 1.2m = 1, 2.4m = 1, 3.6m = 2

technical hotline +44 (0)1268 563720

raised floor systems

63 AMP SYSTEM



End Feeds



STANDARD GREY	AUX GREEN	CLEAN EARTH RED	3 PHASE GREEN	DUAL CE & STD RED / GREY
Standard				
UF63GRY	UF63GRN	UF64RED	UF65GRN	UF66DUO
Opposite End Feed				
UF63GRYLH	UF63GRNLH	UF64REDLH	UF65GRNLH	UF66DUOLH

Each opposite End Feed comes with an end cap to close off the powertrack run.
Terminal Capacity = 16mm².

Integral Feed Track



STANDARD GREY	AUX GREEN	CLEAN EARTH RED
1.2m* pitch 300mm 4 sockets		
IFUB61233GRY	IFUB61233GRN	IFUB61234RED
2.4m* pitch 300mm 8 sockets		
IFUB62433GRY	IFUB62433GRN	IFUB62434RED
3.6m* pitch 300mm 12 sockets		
IFUB63633GRY	IFUB63633GRN	IFUB63634RED

* Nominal length of Interact Underfloor Power excluding feed section. Feed section is 100mm in length.

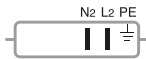
Flexible Interlinks



STANDARD GREY	AUX GREEN	CLEAN EARTH RED	3 PHASE GREEN	DUAL CE & STD RED / GREY
1.2m				
UI6312GRY	UI6312GRN	UI6412RED	UI6512GRN	UI6612DUO
2.4m				
UI6324GRY	UI6324GRN	UI6424RED	UI6524GRN	UI6624DUO
3.6m				
UI6336GRY	UI6336GRN	UI6436RED	UI6536GRN	UI6636DUO

40 AMP SYSTEM

40 Amp Track



STANDARD
GREY SPN



AUX GREEN
SINGLE PHASE



CLEAN EARTH
RED CE



3 PHASE GREEN
TPN



DUAL CE & STD
RED / GREY
DUAL



LENGTH 1.2M

PE is earthed to case

PE is earthed to case

Pitch 600mm
2 sockets

UB41263 GRY

UB41263 GRN

UB41264 RED

UB41265 GRN

UB41266 DUO

LENGTH 2.4M

Pitch 600mm
4 sockets

UB42463 GRY

UB42463 GRN

UB42464 RED

UB42465 GRN

UB42466 DUO

LENGTH 3.6M

Pitch 600mm
6 sockets

UB43663 GRY

UB43663 GRN

UB43664 RED

UB43665 GRN

UB43666 DUO

All 40A underfloor powertracks incorporate shutters and are rated to IP4X.

300mm pitch is available on special request.

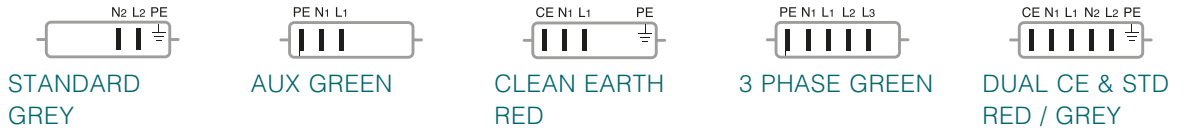
Complies with the requirements of BS EN61534.

Track comes with the following brackets: 1.2m = 1, 2.4m = 1, 3.6m = 2

technical hotline +44 (0)1268 563720

raised floor systems

40 AMP SYSTEM



End Feeds



STANDARD GREY	AUX GREEN	CLEAN EARTH RED	3 PHASE GREEN	DUAL CE & STD RED / GREY
Standard				
UF43 GRY	UF43 GRN	UF44 RED	UF45 GRN	UF46 DUO
Opposite End Feed				
UF43 GRY LH	UF43 GRN LH	UF44 RED LH	UF45 GRN LH	UF46 DUO LH

Each opposite End Feed comes with an end cap to close off the end of the powertrack run.
Terminal Capacity = 16mm².

Integral Feed Track



STANDARD GREY	AUX GREEN	CLEAN EARTH RED
1.2m* pitch 300mm 4 sockets		
IFUB41233 GRY	IFUB41233 GRN	IFUB41234 RED
2.4m* pitch 300mm 8 sockets		
IFUB42433 GRY	IFUB42433 GRN	IFUB42434 RED
3.6m* pitch 300mm 12 sockets		
IFUB43633 GRY	IFUB43633 GRN	IFUB43634 RED

* Nominal length of Interact Underfloor Power excluding feed section. Feed section is 100mm in length.

Flexible Interlinks



STANDARD GREY	AUX GREEN	CLEAN EARTH RED	3 PHASE GREEN	DUAL CE & STD RED / GREY
1.2m				
UI4312 GRY	UI4312 GRN	UI4412 RED	UI4512 GRN	UI4612 DUO
2.4m				
UI4324 GRY	UI4324 GRN	UI4424 RED	UI4524 GRN	UI4624 DUO
3.6m				
UI4336 GRY	UI4336 GRN	UI4436 RED	UI4536 GRN	UI4636 DUO

Tap-off Leads



TYPE	PIN POSITION			CABLE / CONDUIT	CURRENT RATING	PROTECTION	3 METRE**		5 METRE*		KEY CODES ¹	
							2.5mm ²	4.0mm ²	2.5mm ²	4.0mm ²		
STANDARD GREY				N2 L2 PE	LSF / LSF	13A	Fused	UT31301C		UT51301C		
					16mm	32A	Unfused		UT33201 ^{†††}		UT53201 ^{†††}	L
					16mm	13A	Fused	UT31301		UT51301		
AUX / PHASE 1 GREEN	PE	N1	L1		LSF / LSF	13A	Fused	UT31302C		UT51302C		
					16mm	32A	Unfused		UT33202 ^{†††}		UT53202 ^{†††}	
					16mm	13A	Fused	UT31302		UT51302		
PHASE 2 GREEN	PE	N1		L2	LSF / LSF	13A	Fused	UT31310C		UT51310C		
					16mm	32A	Unfused		UT33210		UT53210	T
					16mm	13A	Fused	UT31310		UT51310		
PHASE 3 GREEN	PE	N1		L3	LSF / LSF	13A	Fused	UT31311C		UT51311C		
					16mm	32A	Unfused		UT33211		UT53211	
					16mm	13A	Fused	UT31311		UT51311		
ALL PHASE GREEN	PE	N1	L1	L2 L3	16mm	28A	Unfused		UT33205		UT53205	
CE RED	CE	N1	L1		PE	LSF / LSF	13A	Fused	UT31304C		UT51304C	
					16mm	32A	Unfused		UT33204 ^{†††}		UT53204 ^{†††}	R
					16mm	13A	Fused	UT31304		UT51304		
DUO (RED)	CE	N1	L1	N2 L2 PE	20mm	28A	Unfused		UT33206		UT53206	

Tap-offs are supplied as single cables inside steel flexible conduit, except those with 'C' suffix, which are supplied with 3 or 4 core LSF flex, as appropriate.

* Unfused tap-offs in excess of 3m, must only be used on powertrack protected with a 32A (or less) circuit protection device.

** 3M tap offs. Stated length refers to length of wires within the unit, not the conduit length. Conduit length will be between 2.7 and 2.8 meters in length when fully extended. When un-extended, conduit length will decrease by a further 0.1 to 0.2 meters. Minimum length of un-extended conduit will be 2.5 meters.

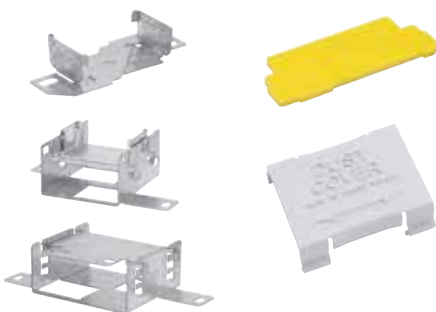
This is to comply with BS7671:2008 17th Edition IEE wiring Regulations.

¹ Key codes shown are from the perspective of the Power Track socket, the tap-off key code will be a mirror image when viewed from underneath. Add 'DE' suffix for Dual Earth High Integrity Earthing^{††}, e.g. UT51301DE. Unfused tap-offs – High Integrity Earthing^{††} as standard.

Fused tap-offs – add '607' suffix for High Integrity Earthing^{††} by use of a single 4mm² earth conductor, e.g. UT51301607

^{†††} Neutrik tap-offs - add 'DEN' suffix for Dual Earth High Integrity Earthing with a neutrik connector e.g. UT33201DEN. For UT33204 and UT53204 add 'N' suffix for the neutrik connector

Other components



PART NO.	DESCRIPTION
UK1	Additional slab brackets
UK3	Additional end plates
UK5*	Height adjustable slab bracket – track 17mm, 27mm and 39mm
UK5F*	Height adjustable slab bracket – end feed 17mm, 27mm and 39mm
UKDC	Additional dust cover

* Fixing brackets should be positioned within 300mm from either end of a track run and either side of all joints.

Minimum support requirement 3.6m length = 4 brackets, 2.4m length = 3 brackets, 1.2m length = 2 brackets.